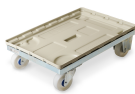
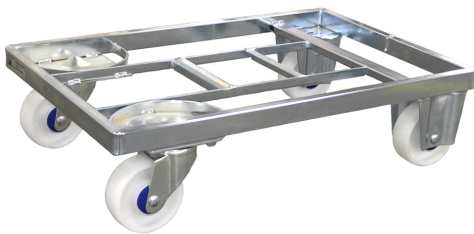


Lean Dolly type I – 600 x 400 mm



The Lean Dolly Type I is equipped with 2 fixed and 2 swivel wheels.

It is designed to carry plastic crates and trays used in the automotive industry. It can easily be integrated into your automated system and used with or without a drawbar.

For optimised external transport and warehousing the Lean dolly can be used together with the Lean adaptor pallet for the warehousing and distribution of components.

The Lean dolly, also known as Bodenroller on our biggest market Germany, is also available in ISO and US dimensions: 24" x 15" and 24" x 22.5".

Designed for following uses and industries:



Key benefits

- ✓ Improve work flow
- ✓ Reduce handling costs
- ✓ Enable reduction of stock level
- ✓ Reduce need for floor space
- ✓ Improve ergonomics
- ✓ Fast and safe truck loading
- ✓ Optimised vehicle fill

Technical specifications

External dimensions	600 x 400 x 157 mm
Tare weight	6,5 kg
Wheel size	100 mm
Wheel type	2 fixed, 2 swivel
Wheel material	CPD, rubber or PU
Working capacity	250 kg
Surface treatment	Zinc electroplated
Lean Adaptor Pallet compatibility	<ul style="list-style-type: none"> ✓ Next Generation (DOS1696 & DOS1725) ✓ Type III (DOS1405)
Safe stacking up to 15 pieces	1950 mm